

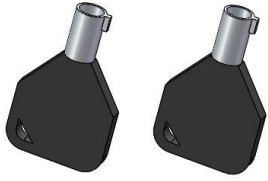


MODEL: H32001/H32001S/H43001/H43001S

## SMART FITNESS MIRROR

[www.vtouchscreen.com](http://www.vtouchscreen.com)

### PARTS LIST



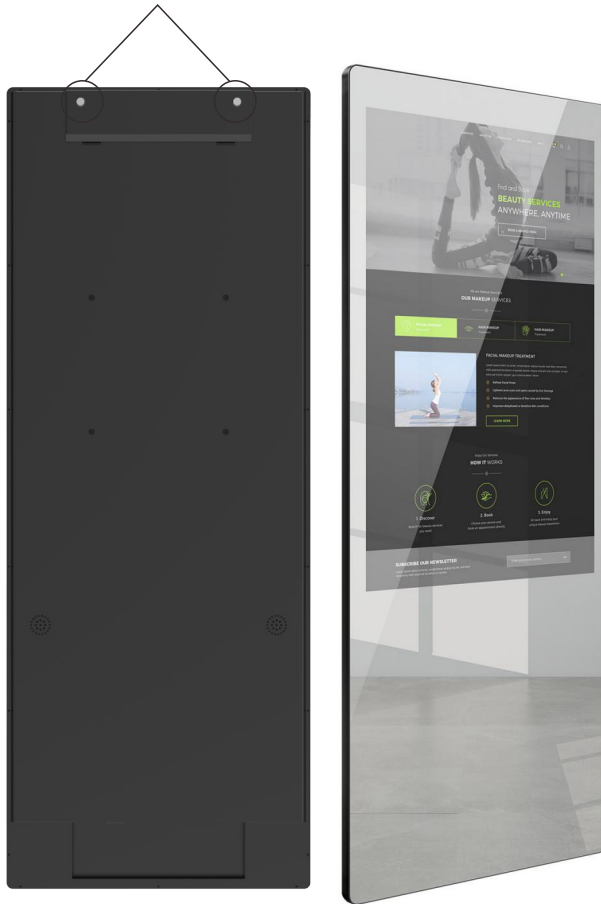
keys for camera box door



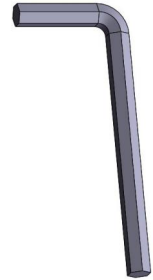
Expansion screw



Power wired



M6 hexagonsocket head cap screws



Internal hexagonal wrench



M8 screw



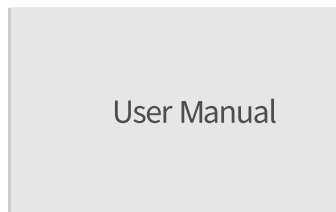
Bracket



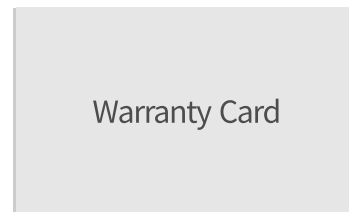
Wall mounted bracket



Body Fat scale \*1 (all vercon smart fitness mirror can choose body fat scale as optional)



User Manual



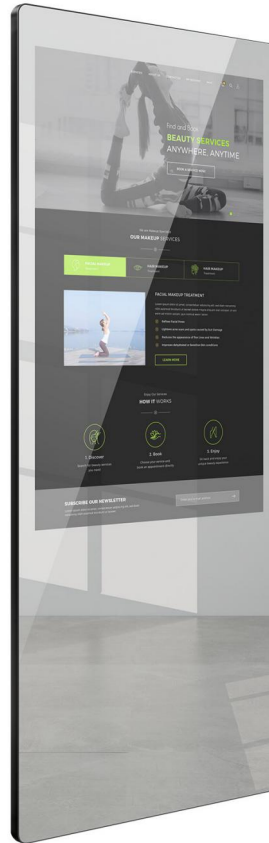
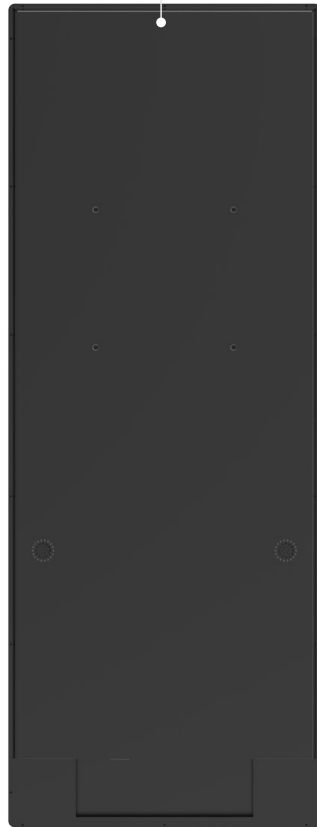
Warranty Card

# INSTALLATION

USER MANUAL MODEL NO. :H32001 (32 INCH)

## PARTS LIST

Camera Here



M8 screw



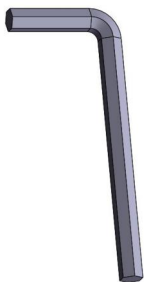
M6 hexagonsocket head cap screws



Expansion screw



Power wired



Internal hexagonal wrench

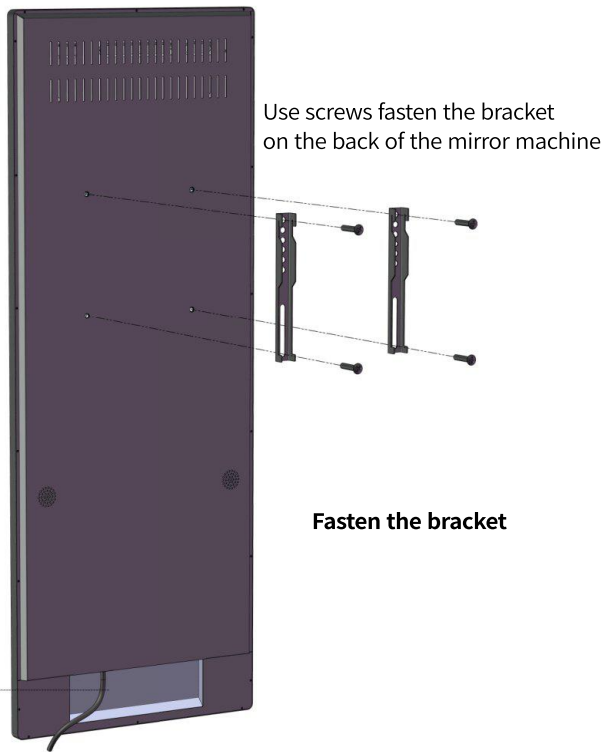


Bracket



Wall mounted bracket

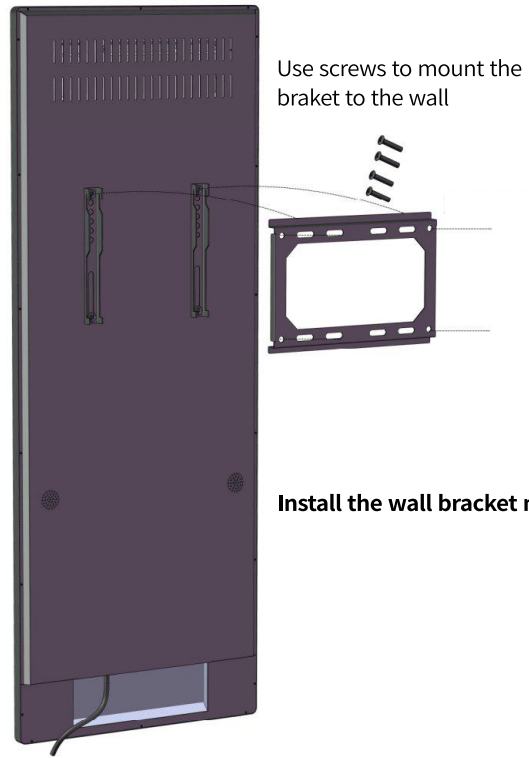
WALL MOUNTED



Use screws fasten the bracket on the back of the mirror machine

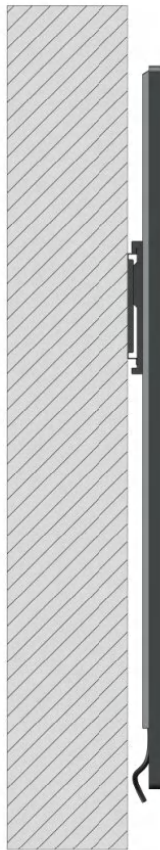
Fasten the bracket

Connect the power wire



Use screws to mount the bracket to the wall

Install the wall bracket mounted



Mount the machine on the wall

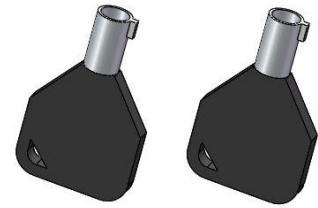


Both wall mounted or floor standing can be made as you need, just choose one way to install.

# INSTALLATION

USER MANUAL MODEL NO. : H43001 (43 INCH)

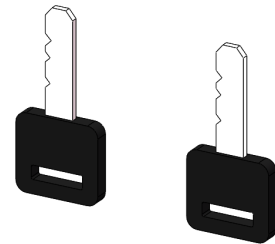
## PARTS LIST



keys for camera box door



Power wired



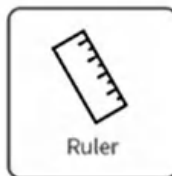
Keys for maintaining door



Tape measure



Percussion drill



Ruler



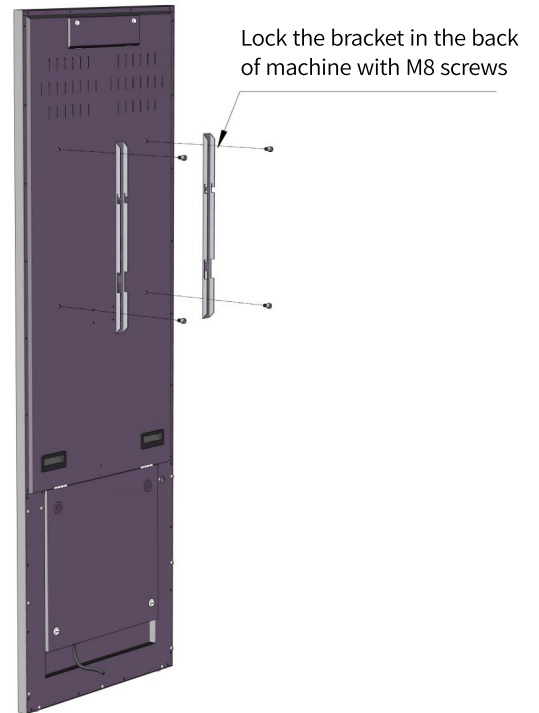
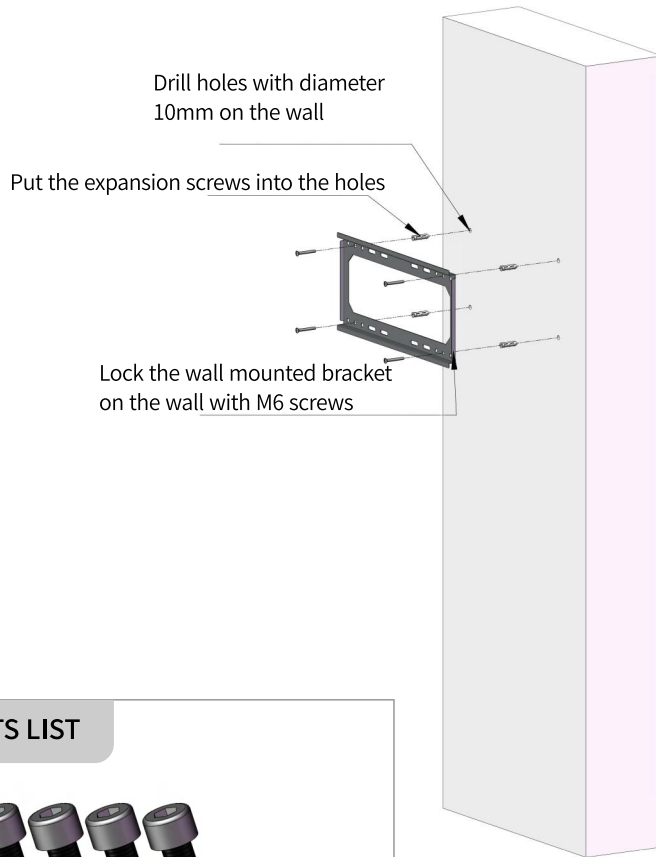
Bolt driver



Hammer

Both wall mounted or floor standing can be made as you need, just choose one way to install.

WALL MOUNTED



PARTS LIST



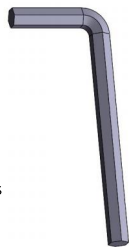
M8 screw



M6 hexagonsocket head cap screws



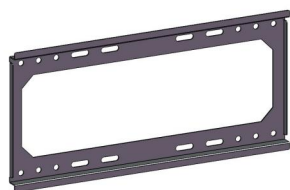
Expansion screw



Internal hexagonal wrench

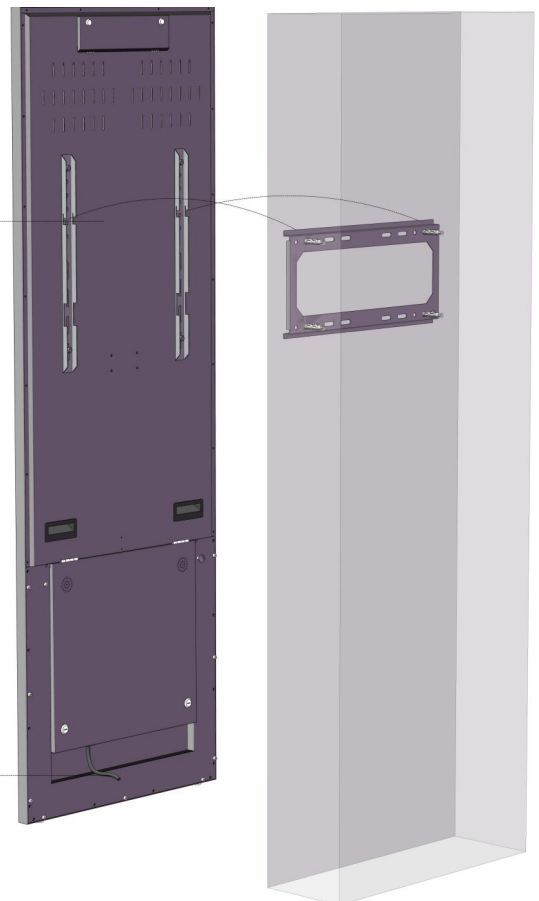


Bracket



Wall mounted bracket

Mount the machine on the wall



# FLOOR STANDING INSTALLATION STEPS

USER MANUAL MODEL NO. : H43001 (43 INCH)

## PARTS LIST



M6 internal hexagonal screws



5mm internal hexagonal wrench



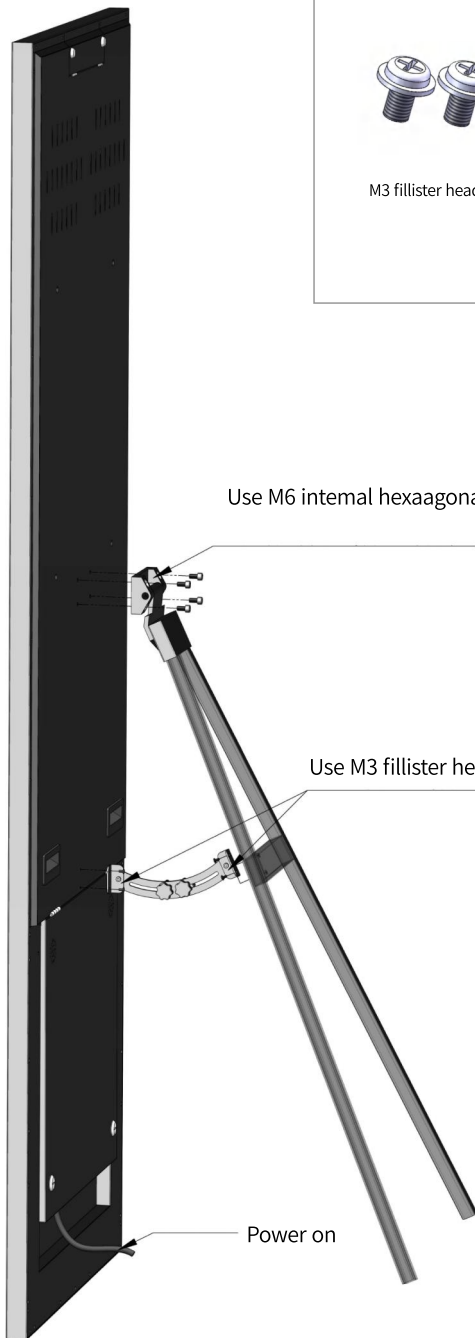
A type bracket



M3 fillister head cushioned screw



Combination of hinge



Use M6 internal hexagonal screws to fasten A type bracket

Use M3 fillister head cushioned screw to fasten Combination of hinge

Power on

# FLOOR STANDING INSTALLATION STEPS

USER MANUAL MODEL NO. : H43001 (43 INCH)

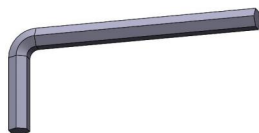
## Installation instructions



### PARTS LIST



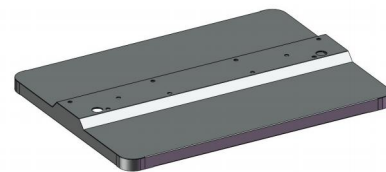
15mm hole plug



4mm internal hexagonal wrench  
5mm internal hexagonal wrench



Bracket



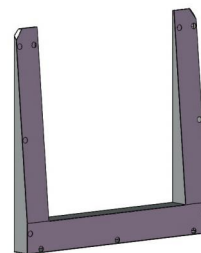
Base



M8 screw



M5 screw

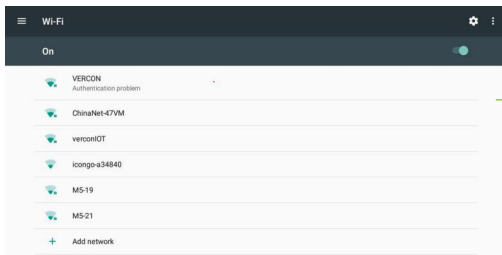
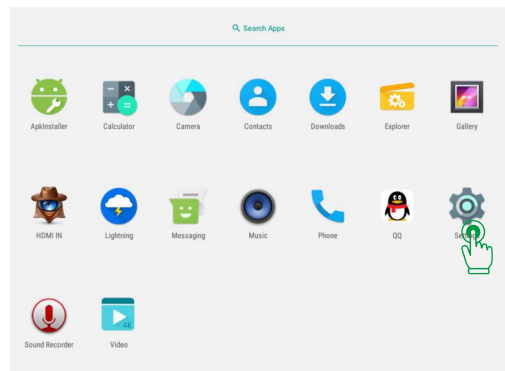
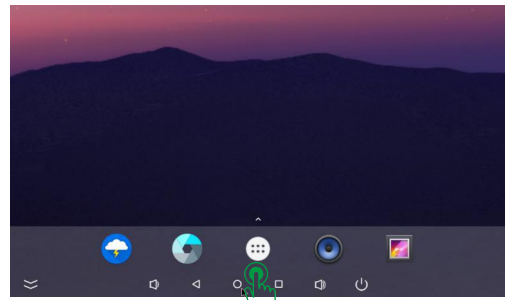
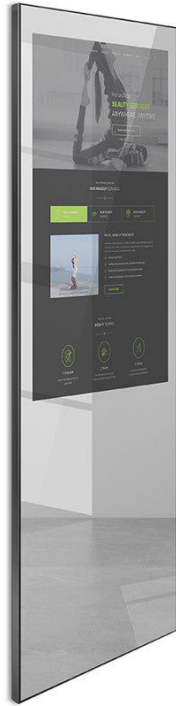


Base bracket

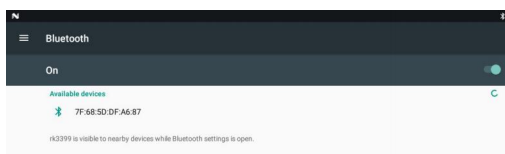


# INSTRUCTIONS

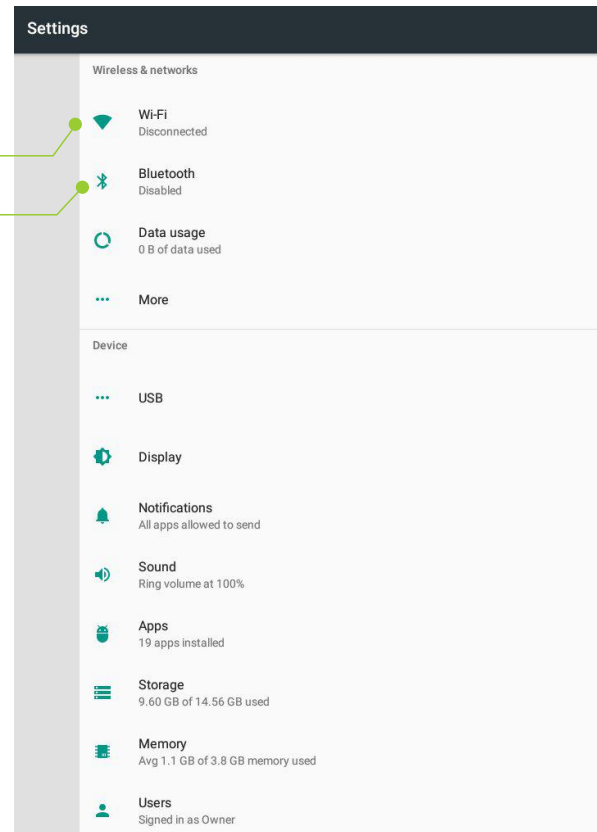
TURNING ON YOUR MIRROR VIA PLUG THE POWER WIRE DIRECTLY.



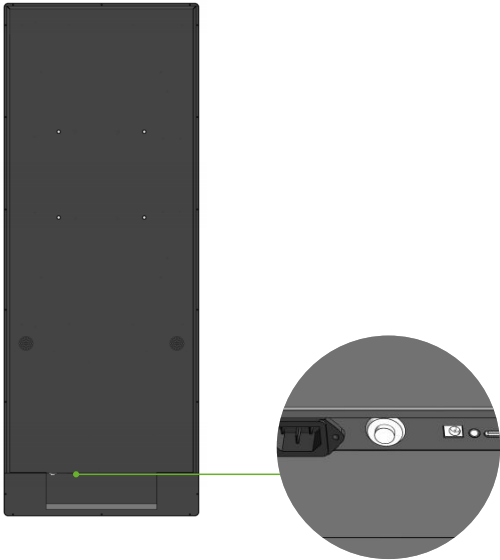
CONNECTING YOUR MIRROR TO WIFI



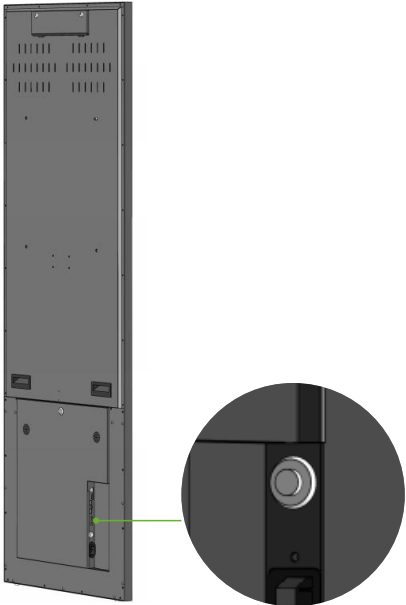
CONNECTING YOUR MICROPHONE OR SPEAKER VIA BLUETOOTH



**STEP 1:** Plug the AC adapter until the AC power button turn red, Press the AC power on.

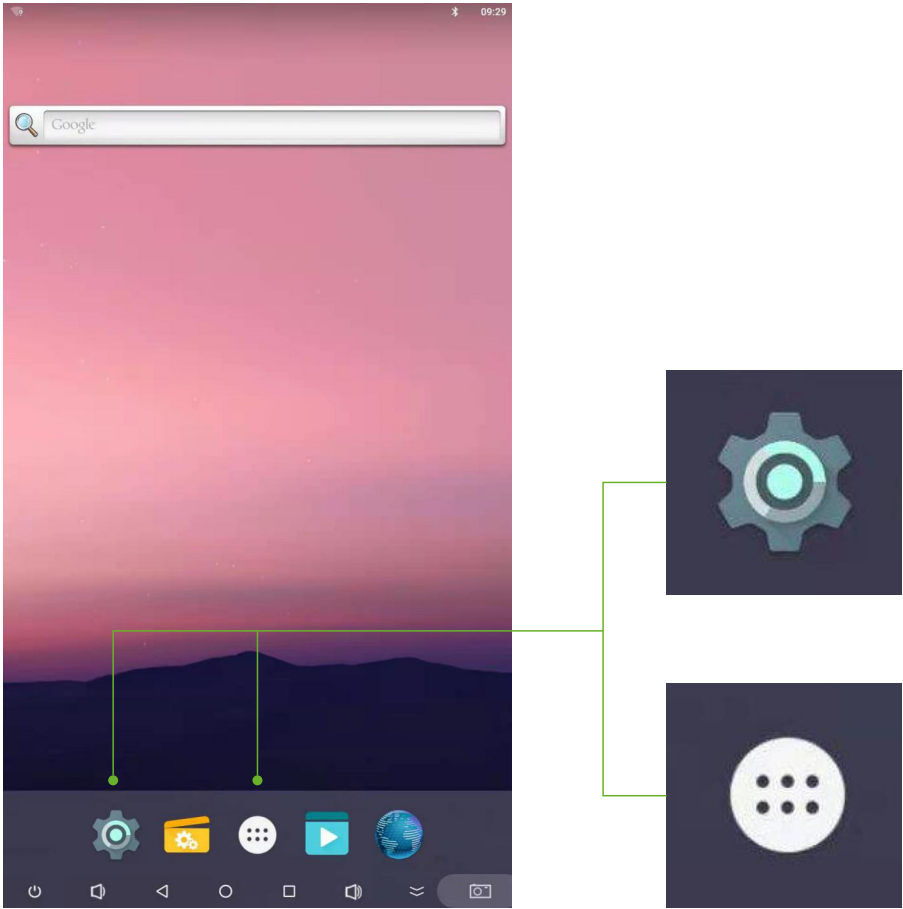


32 inch SMART FITNESS MIRROR



43 inch SMART FITNESS MIRROR

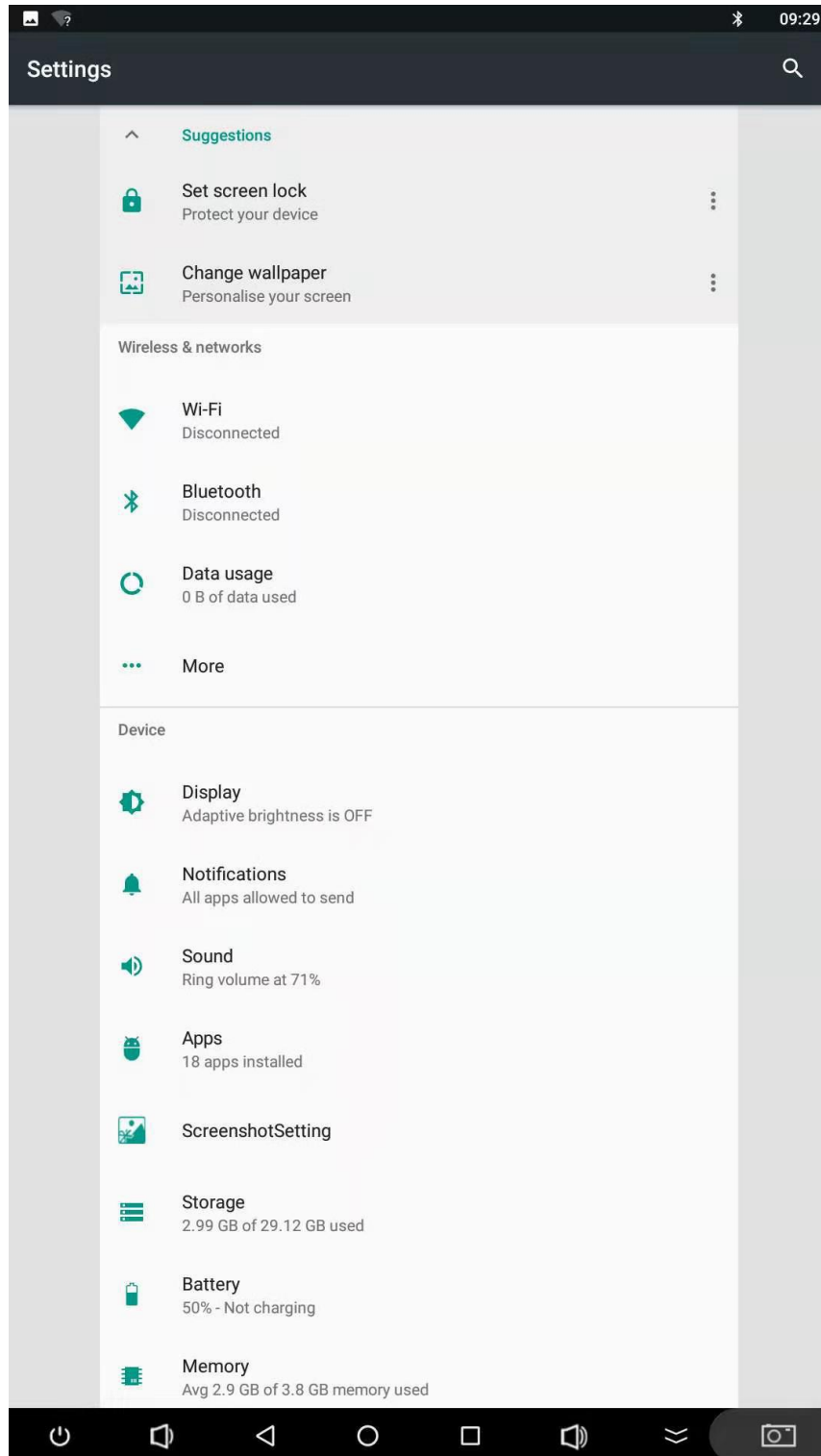
**STEP 2:** After turn on the mirror, you have below interface.



## STEP 3



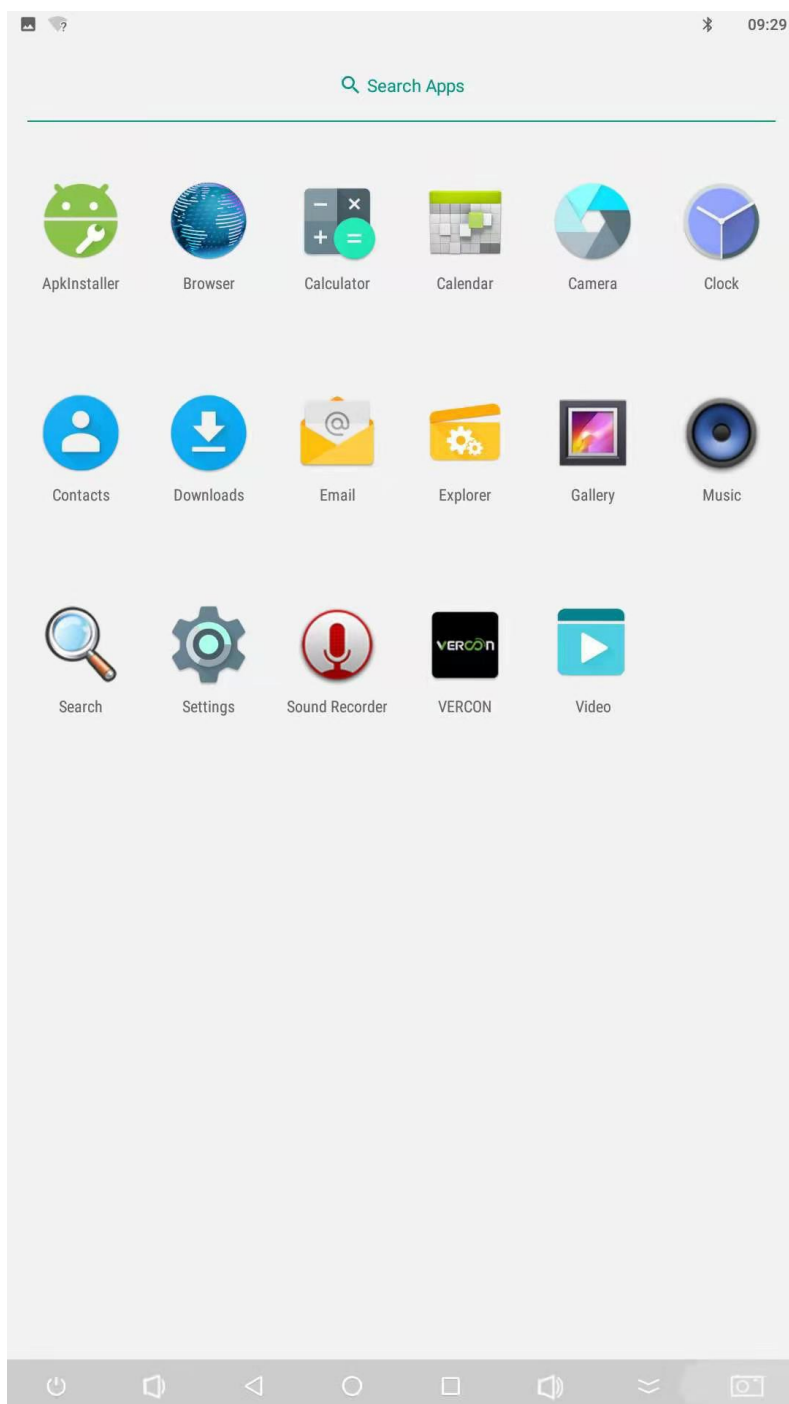
:SETTING HERE, you can setting the wifi, bluetooth, language etc here.



## STEP 4



:Press here, you can find all application here.



# INSTRUCTIONS

## STEP 5



Power on/off



Return back

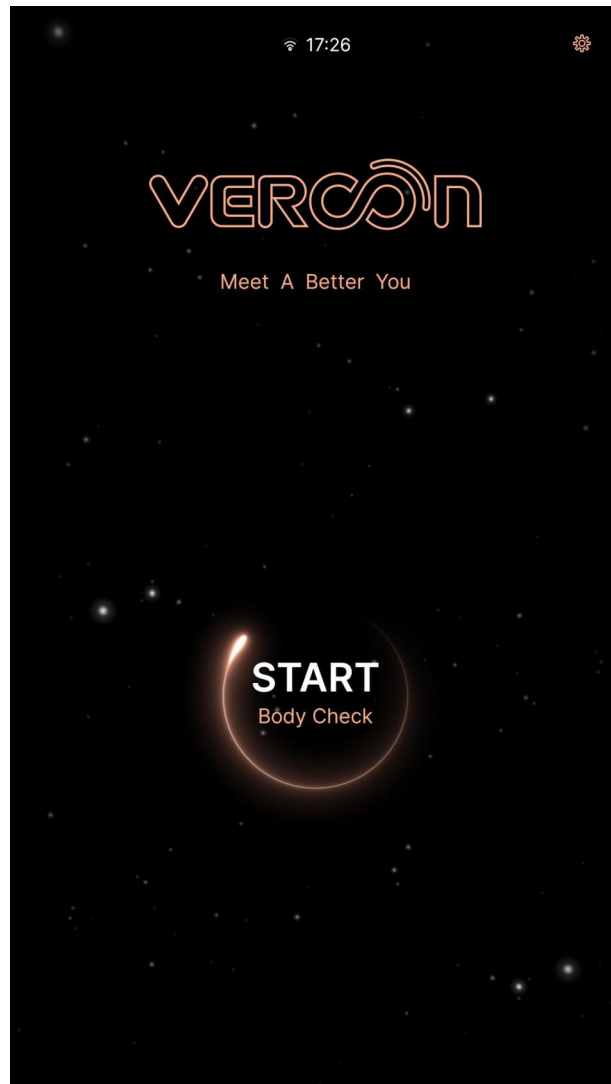


Quit to main interface

## STEP 6

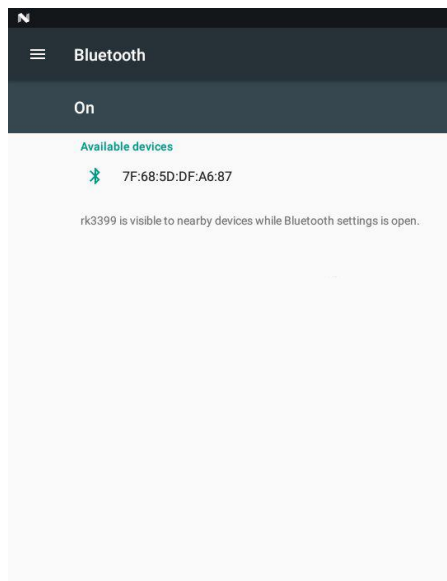
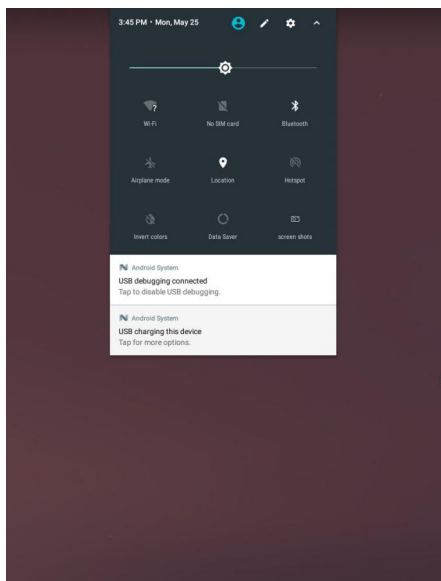
How to use body fat scale with Vercon software

Find vercon software icon on the mirror, make sure bluetooth is open, click vercon software and stand on the body fat scale, follow the voice guide step by step.

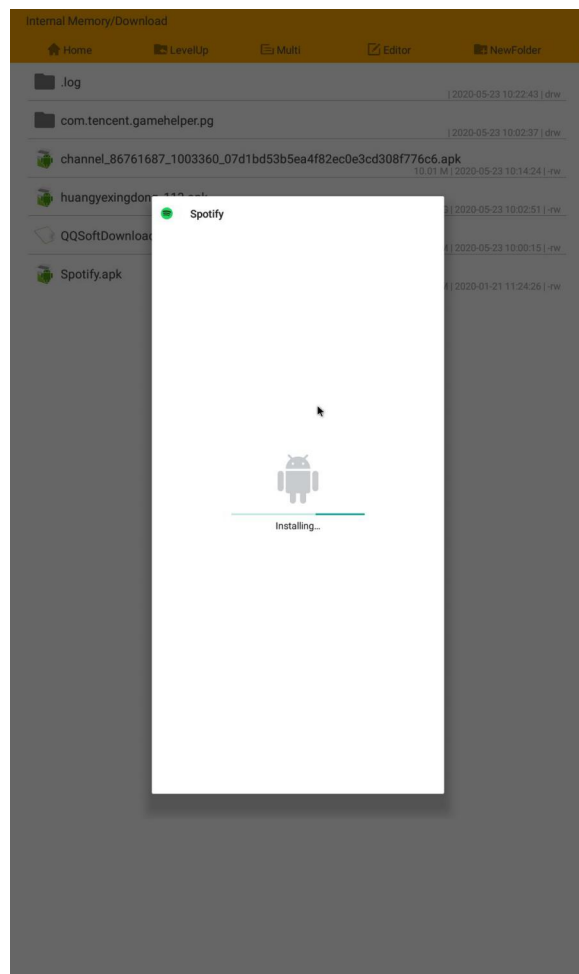
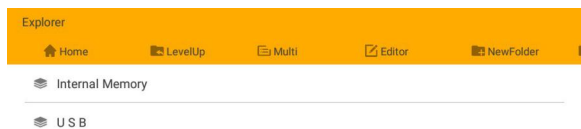
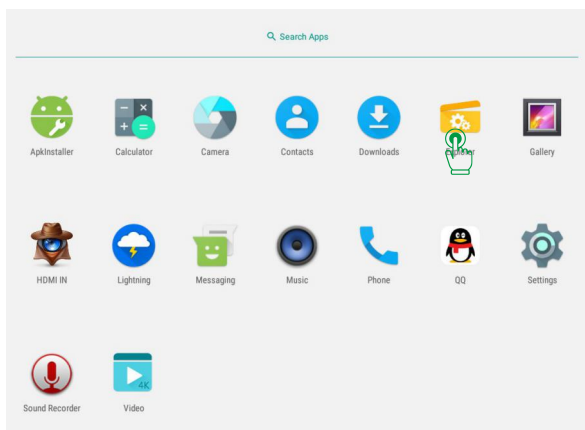


## INSTALL YOUR OWN APP TO YOUR MIRROR

1. Send the installation package to the mirror via USB copy or bluetooth transmitting.



2. Open the installation package and install to run.



# SAFETY INSTRUCTIONS



## IMPORTANT SAFETY INSTRUCTIONS

When using an electrical appliance, basic precautions should always be followed, including the following:

Read all instructions before using Vercon fitness smart mirror.



### **DANGER-To reduce the risk of electric shock:**

1. Always unplug this mirror from the electrical outlet immediately after using and before cleaning.



### **Warning - To reduce the risk of burns, fire, electric shock, or injury to persons:**

1. An smart mirror should never be left unattended when plugged in. Unplug from outlet when not in use, and before putting on or taking off parts.

2. Do not operate under blanket or pillow. Excessive heating can occur and cause fire, electric shock, or injury to persons.

3. This smart mirror is not intended for use by persons with reduced physical, sensory or mental capabilities, or lack of experience and knowledge, unless they have been given supervision or instruction concerning use of the appliance by a person responsible for their safety. Keep children under the age of 13 away from this machine.

4. Never operate this smart mirror if it has a damaged cord or plug, if it is not working properly, if it has been dropped or damaged, or dropped into water. Return professional center for examination and repair.

5. Do not carry this smart mirror by supply cord or use cord as a handle.

6. Keep the cord away from heated surfaces.

7. Never operate the smart mirror with air openings blocked. Keep the air openings free of lint, hair, and the like.

8. Never drop or insert any object into any opening.

9. Do not use outdoors.

10. Do not operate where aerosol (spray) products are being used or where oxygen is being administered.

11. Do not use the smart mirror in an unstable voltage environment, which will cause the mirror broken down and fire.



## Warnings

. Always ensure that the Vercon fitness smart mirror is wiped down after each use to keep it sanitary.

. Cleaning and user maintenance shall not be made by children without supervision.

. The appliance is suitable for moderate climates only.

. The ventilation must not be impaired by covering the appliance with items such as newspapers, table cloths, curtains, etc.

. Naked flame sources, such as candles, must not be placed on the appliance.

. The disconnection from line voltage is made by inlet/plug.

. The outlet shall be installed near the equipment and shall be easily accessible.

. In case of broken cords or plugs the appliance must be disposed of.

. The appliance is suitable for indoor using only.

. Never use if the glass breaks.



Guangzhou Vercon Technology Co., Ltd.

Add: No. 68 Nanxiang Yi Road, Science City, Guangzhou High Tech Industrial.

Website: <https://www.vtouchscreen.com>;

Mobile/Whatsapp: +86-13711212050

Email: [sarahzhang@vtouchscreen.com](mailto:sarahzhang@vtouchscreen.com)